

Specification		X-T30	
Model name	FUJIFILM X-T30		
Number of effective pixels	26.1 million pixels		
Image sensor	23.5mm×15.6mm (APS-C) X-Trans CMOS 4 with primary color filter		
Sensor Cleaning system	Ultra Sonic Vibration		
Storage media	SD memory card (~2GB) / SDHC memory card (~32GB) / SDXC memory card (~512GB) UHS-I		
File format of still image	JPEG: Exif Ver.2.3 **, RAW: 14bit RAW (RAF original format) / RAW+JPEG		
Number of recorded pixels	[L] (3:2) 6240×4160 (16:9) 6240×3512 (1:1) 4160×4160 [M] (3:2) 4416×2944 (16:9) 4416×2488 (1:1) 2944×2944 [S] (3:2) 3120×2080 (16:9) 3120×1760 (1:1) 2080×2080		
Lens mount	FUJIFILM X mount		
Sensitivity	Standard output AUTO1 / AUTO2 / AUTO3 (up to ISO12800) / ISO160~12800 (1/3 step) Extended output ISO80 / 100 / 125 / 25600 / 51200		
Exposure control	TTL 256-zone metering, Multi / Spot / Average / Center Weighted		
Exposure mode	P (Program AE) / A (Aperture Priority AE) / S (Shutter Speed Priority AE) / M (Manual Exposure)		
Exposure compensation	-5.0EV~+5.0EV 1/3EV step (Movie: -2.0EV~+2.0EV)		
Shutter type	Focal Plane Shutter		
Shutter speed	Mechanical Shutter	P mode: 4sec. to 1/4000sec. A mode: 30sec. to 1/4000sec. S/M mode: 15min. to 1/4000sec. Bulb mode: up to 60min.	
	Electronic Shutter *2	P mode: 4sec. to 1/32000sec. A mode: 30sec. to 1/32000sec. S/M mode: 15min. to 1/32000sec. Bulb mode: 1sec. Fixed	
	Mechanical+ Electronic shutter	P mode: 4sec. to 1/32000sec. A mode: 30sec. to 1/32000sec. S/M mode: 15min. to 1/32000sec. Bulb mode: up to 60min.	
	Synchronized shutter speed for flash	1/180sec. or slower	
Continuous shooting	Approx. 30fps [Only electronic shutter, 1.25x Crop] (JPEG: 26 frames Lossless compression RAW: 17 frames Uncompressed RAW: 17 frames) Approx. 20fps [Only electronic shutter, 1.25x Crop] (JPEG: 53 frames Lossless compression RAW: 17 frames Uncompressed RAW: 17 frames) Approx. 10fps [Only electronic shutter, 1.25x Crop] (JPEG: 95 frames Lossless compression RAW: 18 frames Uncompressed RAW: 18 frames) Approx. 20fps [Only electronic shutter] (JPEG: 32 frames Lossless compression RAW: 17 frames Uncompressed RAW: 17 frames) Approx. 10fps [Only electronic shutter] (JPEG: 81 frames Lossless compression RAW: 18 frames Uncompressed RAW: 18 frames) Approx. 8fps (JPEG: 90 frames Lossless compression RAW: 18 frames Uncompressed RAW: 18 frames) Approx. 5fps (JPEG: 205 frames Lossless compression RAW: 24 frames Uncompressed RAW: 19 frames) Approx. 4fps (JPEG: 209 frames Lossless compression RAW: 28 frames Uncompressed RAW: 20 frames) Approx. 3fps (JPEG: 216 frames Lossless compression RAW: 34 frames Uncompressed RAW: 21 frames)		
	Pre-shot	Approx. 30fps [Only electronic shutter, 1.25x Crop] (max. 10 frames while half press, max. 12 frames after full press, total max. 22 frames) Approx. 20fps [Only electronic shutter, 1.25x Crop] (max. 10 frames while half press, max. 22 frames after full press, total max. 32 frames) Approx. 10fps [Only electronic shutter, 1.25x Crop] (max. 10 frames while half press, max. 68 frames after full press, total max. 78 frames) *Recordable frames depends on recording media *Speed of continuous shooting depends on shooting environment and shooting frames	
	Auto bracketing	AE Bracketing (Frames: -2, -3, +3, +2, ±9, ±7, ±5, ±3 Step: 1/3EV, 2/3EV, 1EV, 4/3EV, 5/3EV, 2EV, 7/3EV, 8/3EV, 3EV) Film simulation bracketing (Any 3 types of film simulation selectable) Dynamic Range Bracketing (100%, 200%, 400%) ISO sensitivity Bracketing (±1/3EV, ±2/3EV, ±1EV) White Balance Bracketing (±1, ±2, ±3) Focus Bracketing (Frames: 1~999, Step: 1~10, Interval: 0~10s)	
	Focus	Mode Single AF / Continuous AF / MF Type Intelligent Hybrid AF (TTL contrast AF / TTL phase detection AF) AF frame selection Single point AF: EVF / LCD: 13×9 / 25×17 (Changeable size of AF frame) Zone AF: 3×3 / 5×5 / 7×7 from 91 areas on 13×9 grid Wide/Tracking AF: (up to 18 area) *AF-S: Wide / AF-C: Tracking All	
	White balance	Automatic Scene recognition / Custom1~3 / Color temperature selection (2500K~10000K) / Preset: Fine, Shade, Fluorescent light (Daylight), Fluorescent light (Warm White), Fluorescent light (Cool White), Incandescent light, Underwater	
	Self-timer	10sec. / 2sec.	
	Interval timer shooting	Yes (Setting: Interval, Number of shots, Starting time)	
	Flash	Manual pop-up flash (Super Intelligent Flash) Guide number: approx. 7 (ISO200 - m) / approx. 5 (ISO100 - m)	
	Flash modes	TTL (FLASH AUTO / STANDARD / SLOW SYNC.) / MANUAL / COMMANDER / OFF	
	Hot shoe	SYNC. MODE 1ST CURTAIN / 2ND CURTAIN Yes (Dedicated TTL Flash compatible)	
Viewfinder	0.39 inch approx. 2.36 millions dots OLED Color Viewfinder Coverage of viewing area vs. capturing area: approx. 100% Magnification: 0.62× with 50mm lens (35mm equivalent) at infinity and diopter set to -1m ⁻¹ Diagonal angle of view: approx. 31° (Horizontal angle of view: approx. 26°) Built-in eye sensor AUTO Brightness Setting: 50~800cd/m ²		

LCD monitor	3.0 inch, aspect ratio 3:2, approx. 1.04 million dots touch screen color LCD monitor (approx. 100% coverage)	
Movie recording	File format	MOV (MPEG-4 AVC / H.264, Audio: Linear PCM / Stereo sound 24bit / 48KHz sampling)
	File size	[DCI 4K (4096×2160)]
	Frame rate	29.97p / 25p / 24p / 23.98p 200Mbps / 100Mbps up to approx. 10min
	Recording time	[4K (3840×2160)] 29.97p / 25p / 24p / 23.98p 200Mbps / 100Mbps up to approx. 10min [Full HD (2048×1080)] 59.94p / 50p / 29.97p / 25p / 24p / 23.98p 200Mbps / 100Mbps up to approx. 15min. [Full HD (1920×1080)] 59.94p / 50p / 29.97p / 25p / 24p / 23.98p 200Mbps / 100Mbps up to approx. 15min. [Full HD (1920×1080) High speed rec.] 120p / 100p 200Mbps (recording) up to approx. 6min. *For recording movies, use a SD memory card with UHS Speed Class 3 or higher. *Although movie recording will continue without interruption when the file size reaches 4GB, subsequent footage will be recorded to a separate file which must be viewed separately.
Photography functions	Advanced SR AUTO, Face / Eye detection AF, Auto Red-eye Removal, Select custom setting, Panorama, Color space, Setting (Color, Sharpness, D-range, Highlight tone, Shadow tone), Framing guideline, Frame No. memory, Histogram display, Preview depth of focus, Lens Modulation Optimizer, Pre-AF, Number of Focus Points setting, MF Assist, Focus check, Focus Peak Highlight, Electronic level, Multiple exposure, Release priority / Focus priority selection, Fn button setting, ISO AUTO control, Instant AF setting (AF-S/AF-C), AF-C CUSTOM SETTINGS, SHUTTER AF, SHUTTER AE, AF-ON, Interlock spot AE & Focus area, Focus area setting, AE-L/AF-L button setting, Edit/Save Quick menu, Preview exp./WB in manual mode, Shutter Type, Touch Screen Setting, Sports Finder Mode, Pre-Shot, Flicker Reduction	
	Film simulation mode 16 modes (PROVIA/Standard, Velvia/Vivid, ASTIA/Soft, Classic Chrome, PRO Neg.Hi, PRO Neg.Std, Black & White, Black & White+Ye Filter, Black & White+R Filter, Black & White+G Filter, Sepia, ACROS, ACROS+Ye Filter, ACROS+R Filter, ACROS+G Filter, ETERNA/Cinema) B & W Adjustment: -9~+9	
Grain effect	STRONG, WEAK, OFF	
	Color chrome effect STRONG, WEAK, OFF	
	Dynamic range setting AUTO, 100%, 200%, 400% ISO restriction (DR100%: No limit, DR200%: ISO320 or more, DR400%: ISO640 or more)	
Advanced filter	Toy camera, Miniature, Pop color, High-key, Low-key, Dynamic tone, Soft focus, Partial color (Red / Orange / Yellow / Green / Blue / Purple)	
	Playback functions RAW conversion, Image rotate, Auto image rotate, Face Detection, Red-eye removal, Photobook assist, Erase selected frames, Multi-frame playback (with micro thumbnail), Slide show, Protect, Crop, Resize, Panorama, Favorites, Voice Memo Setting	
Wireless transmitter	Standard	IEEE802.11b/g/n (standard wireless protocol)
	Encryption	WEP / WPA / WPA2 mixed mode
	Access mode	Infrastructure
Bluetooth®	Standard	Bluetooth Ver 4.2 (Bluetooth low energy)
	Operating frequency (Center frequency)	2402 - 2480MHz
Wireless functions	Geotagging, Wireless communication (Image transfer), View & Obtain Images, Remote camera shooting, PC Autosave, Image Transfer Order, instax printer print	
Other functions	Exif Print, 35 Languages, Date/Time, Time difference, Sound & Flash OFF, Performance Setting, Preview exp. in Manual mode, LCD Brightness, LCD Color, Preview Pic. Effect, DISP. Custom Setting, LARGE INDICATORS MODE (EVF), LARGE INDICATORS MODE (LCD), LARGE INDICATORS DISP. SETTING, Copyright Setting	
	Digital interface	USB Type-C (USB3.1 Gen1)
	HDMI output	HDMI micro connector (Type D)
Power supply	Other	ø2.5mm, stereo mini connector (Microphone), Hot shoe
	Battery life for still images**	NP-W126S Li-ion battery (included) Approx. 380 frames (Normal Mode) When XF35mmF1.4 R is set.
Actual battery life of movie capture**4	[4K] approx. 45min. (29.97p)	
	[Full HD] approx. 45min. (59.94p)	
Continuance battery life of movie capture**4	[4K] approx. 60min. (29.97p)	
	[Full HD] approx. 75min. (59.94p)	
Dimensions	118.4mm (W) × 82.8mm (H) × 46.8mm (D) / 4.66in. (W) × 3.26in. (H) × 1.84in. (D)	
Weight	Approx. 383g (including battery and SD memory card)	
	Approx. 333g (excluding battery and SD memory card)	
Operation Environment	Temperature 0°C~+40°C Humidity 10%~80% (no condensation)	
Starting up period	Approx. 0.4sec.	
Accessories included	Li-ion battery NP-W126S, AC power adapter, Shoulder strap, Body cap, Strap clip, Protective cover, USB cable, Clip attaching tool, Owner's manual	









*1 Exif 2.3 is a digital camera file format that contains a variety of shooting information for optimal printing.
*2 The Electronic Shutter may not be suitable for fast-moving objects. Flash can not be used.
*3 Approximate number of frames or movie recording time that can be taken with a fully-charged based on CIPA Standard.
*4 When Face detection is set to OFF.

[more info https://fujifilm-x.com/x-t30/](https://fujifilm-x.com/x-t30/)



Silver

Black

Charcoal Silver

To ensure correct usage, read owner's manual carefully before using your equipment. All photos, illustrations, drawings and other images in this brochure are intended for illustrative purposes only.

•Windows is either a registered trademark or trademark of Microsoft Corporation in the United States and/or other countries.
•Macintosh, Mac OS and macOS are trademarks of Apple Inc., registered in the U.S. and other countries. •HDMI, HDMI and High-Definition Multimedia interface are either trademarks or registered trademarks of HDMI Licensing. •The Bluetooth® word mark and logos are registered trademarks owned by the Bluetooth SIG, Inc. and any use of such marks by FUJIFILM Corporation is under license. •SDXC logo is a trademark. •All other trademarks are the property of their respective holders.

For more information, please visit our website http://www.fujifilm.com/products/digital_cameras/index.html
•Specifications are subject to change without notice ©2019 FUJIFILM Corporation

FUJIFILM
Value from Innovation

X-T30

Compact and lightweight mirrorless camera

 the Little GIANT



FUJIFILM
FUJIFILM Corporation

the 4th GENERATION

Mirrorless cameras have taken the next leap in expressive capability

The X-T30 is the coming together of features developed over four generations of X Series. This includes enhanced image quality and processing speed using the combination of the latest X-Trans CMOS 4 sensor and image processing engine, in an even more compact and lightweight body.



X SERIES FUJINON X MOUNT

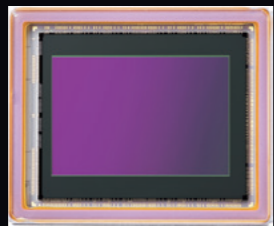


X-T3

X-T30

The new X-T30, offers similar performance to the X-T3, in a smaller and lighter body. It has the same phase-detection AF system with almost 100% frame coverage, blackout-free high-speed continuous shooting of up to 30fps, monochrome adjustment function, Color Chrome effect and Sports Viewfinder mode while also offering functions that cater to the less professional photographer, such as the Advanced SR Auto function as well.

"The Little Giant - X-T30" offers premium image quality in its compact and lightweight mirrorless camera body.



X-TRANS CMOS 4

Back-illuminated 26.1 megapixel image sensor

The X-T30 features the X Series' fourth-generation X-Trans CMOS 4 sensor. Boasting a resolution of 26.1 MP, the sensor uses the unique X-Trans color filter array to reduce moiré and false colors without the need for an optical low pass filter. Its back-illuminated structure enhances image quality while reducing noise levels and extending the sensitivity to ISO160.



X-Processor 4

Perfectly paired image processing engine for maximum performance

The new X-Processor 4 has a quad-core design to utilize the full potential of the X-Trans CMOS 4 sensor. This combination of processor and sensor is behind the enhanced Film Simulation mode, which enables you to achieve richer colors and tones, as well as significant improvement in the camera's ability to track a moving subject, faster and more accurate autofocus, and enhanced 4K/30P video capabilities.



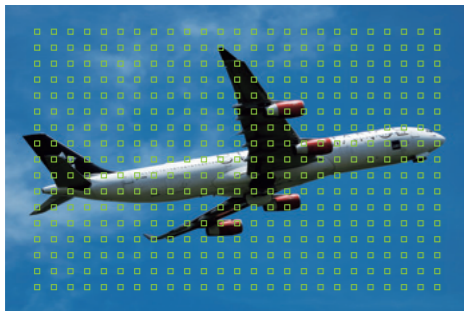
X-T30 + XF18-55mmF2.8-4 R LM OIS 1/30sec. F10 ISO80 Film Simulation: PROVIA



X-T30 + XF56mmF1.2 RAPD 1/250sec. F2 ISO400 Film Simulation: PROVIA

Faster and more accurate AF performance

The number of phase detection pixels in the sensor has been increased to 2.16 million and the phase detection AF area covers the entire frame (approx. 100%), enabling fast and accurate autofocusing. The low-light limit for phase detection AF has been also expanded from +0.5EV in the previous-generation camera systems to -3.0EV.



AF modes available are "Single Point AF" for prioritizing focus on a single chosen point, "Zone AF" suitable for a moving subject, and "Wide/Tracking AF." Each of them can be combined with the AF-S and AF-C modes to create six AF patterns in total.

AF-S + Single Point

Basic AF mode for focusing on a single chosen point in a subject

AF-S + Zone

Capturing a moving subject in a large AF area

AF-S + Wide

Automatically capturing a subject that makes unpredictable movements across the frame

AF-C + Single Point

Capturing a subject that makes a linear movement

AF-C + Zone

Tracking a subject that makes less-challenging movements that can be followed manually hand-held

AF-C+Tracking

Automatically tracking a subject that moves across the frame

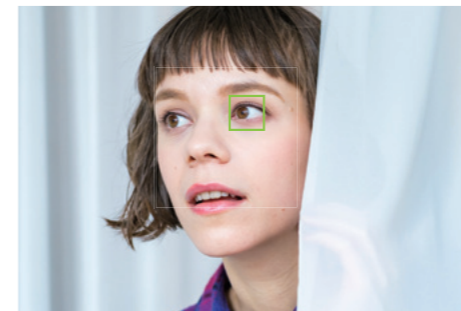
Mechanical Shutter and Electronic Shutter

The X-T30 can shoot continuously at up to 8.0fps in full resolution when using the mechanical shutter, and offers the Sport Viewfinder mode, which shoots pictures within a cropped area representing approx. 16.6 megapixels (1.25x crop), marked within the viewfinder view, so that you can check the movements of a subject even before it comes into the shooting frame. By using the electronic shutter, the X-T30 supports blackout-free high-speed continuous shooting of up to 30fps. When the electronic shutter is selected, you can also choose the Silent mode.



"Face- and eye-detection AF" for better portrait photographs

The tracking performance of the "Face- and Eye-detection AF" is twice as good as previous models. The X-T30 maintains accurate focus on people from the front or side in scenes which were notoriously difficult to track. The eye-detection AF is also supported in the AF-C mode, focus-tracking subject's eyes in portraiture that involves movements. The eye-detection AF can be configured to priority-focus on either right or left eye or the eye closest to the camera. It is a powerful tool in portrait photography, which demands focus accuracy with a shallow depth of field.



"Face Select"

When there are multiple faces within the frame, you can select a specific person on the touchscreen panel or with the Focus Lever so that autofocus and exposure settings are optimized for the subject. "Face Select" is a perfect tool when shooting commemorative photos or shooting a specific person in a large crowd in sports or other events.





4K/30P video recording and high resolution digital audio

Thanks to the 4th generation image sensor and processor, the X-T30 boasts superb 4K video recording features. It actually records in 6K (6240x3510) to produce stunning quality in 4K (3840x2160). The camera also supports the DCI format (17:9), which gives an even more cinematic look to your videos. The X-T30 adopts high resolution audio recording without the need for additional accessories. Finally, F-Log recording and 4:2:2 10bit output via the HDMI port are also supported making the camera suitable to produce more professional, fully fledged videos.

4K [DCI4K 17:9] 4096x2160px / [4K 16:9] 3840x2160px
29.97p / 25p / 24p / 23.98p 200Mbps, 100Mbps

Full HD [17:9] 2048x1080px / [16:9] 1920x1080px
59.94p / 50p / 29.97p / 25p / 24p / 23.98p 200Mbps, 100Mbps, 50Mbps



Stereo microphone MIC-ST1 Headphone equipped



"Face and eye-detection AF for video recording"

Face and eye-detection AF is also available when recording video. Together with the "Face Select" function, you can switch who is in focus while recording by using the touchscreen panel or the Focus Lever.



4K video with Film Simulation modes

You can shoot 4K movies using any of the Film Simulation modes. ETERNA, is particularly suitable for video thanks to its subdued colors and rich shadow tones, giving a cinematic look. ACROS delivers monochrome video with fine textures and rich gradation, while CLASSIC CHROME creates a unique atmosphere, reminiscent of vintage reversal films. Velvia gives an option of giving high saturation to video imagery.





X-T30 4 XF55-200mmF3.5-4.8 R LM OIS 1/1150sec. F9 ISO800

FUJIFILM's unique Film Simulation modes

A total of 16 Film Simulation options are available, producing rich colors and tones that reflect your creative intentions just as if you were swapping between different types of photographic films. This is a function exclusive to FUJIFILM, developed with the company's color presentation philosophy and know-how perfected over 80 years of manufacturing photographic film. Diverse options available include PROVIA and Velvia, named after FUJIFILM's own photographic films, as well as ETERNA, which emulates the tones of motion pictures, CLASSIC CHROME, suitable for documentary photos, as well as two types of monochrome filters including ACROS.



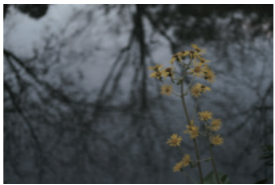
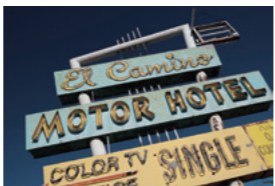
PROVIA
This is a standard option that caters to a variety of situations. It delivers radiant skin tones and vibrant colors in what FUJIFILM calls "memory colors," exactly as you remember them.



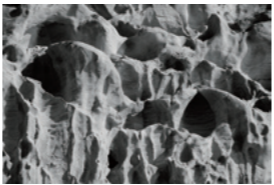
Velvia
This option is characterized with high saturation combined with memory colors. It is perfect for landscape and wildlife photographs with rich blues and vivid primary colors, or for night scenes thanks to its deep blacks.



ASTIA
This option offers soft tones and high saturation at the same time, showcasing radiant skin tones and smooth gradation. It is ideal for outdoor portraits, when you want to ensure vibrant tones in the background.



CLASSIC CHROME
This option adds an air of profound depth to pictures with subtle colors and muted tones. It is designed primarily to create a unique atmosphere, reminiscent of vintage reversal films.



ACROS
This is a monochrome option, designed in pursuit for fine textures, deep blacks and rich gradation. It offers the benefit of providing fine details at low ISOs and graininess at high ISOs.



PRO Neg. Hi
This option creates high-contrast portraits even in overcast outdoor conditions or indoor situations with flat lighting. It is characterized by natural skin tones, setting it apart from other options that provide memory colors.



PRO Neg. Std
This option produces realistic and natural skin tones in portraits shot under controlled lighting. Its softer and gentler tones with low saturation create snapshots with a difference.



ETERNA
This option is characterized with subdued colors and smooth halftones in shadows, creating the atmosphere of motion pictures.

MONOCHROME
This is a standard monochrome option with added clarity, lending itself well to a variety of scenes.

SEPIA
This option adds a warm brown tone across the frame to simulate a sepia look.

Special effects that enhance your photography

The X-T30 offers various effects that can be combined with Film Simulation modes to enhance creative flair in color tones and gradations. The special effects available include the Color Chrome effect, which produces deeper colors and gradation in subjects that contain highly saturated colors, which are notoriously difficult to photograph. The Monochrome Adjustment function faithfully reproduces warm and cool blacks in digital photos, which used to be achieved with specific photographic papers and developers. The Grain effect adds graininess, typically seen in film-based pictures, to digital photos to create an analog-like texture. The camera also provides means of adjusting highlight tones, shadow tones, sharpness and other properties.



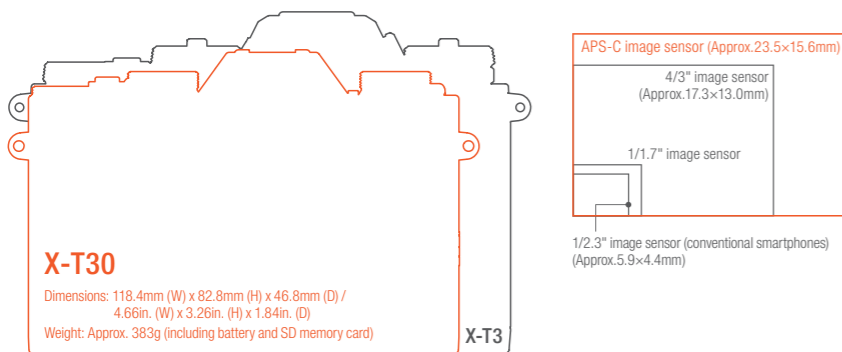
OFF Color Chrome effect "Strong"

STYLING Compact and lightweight design with advanced handling and functionality



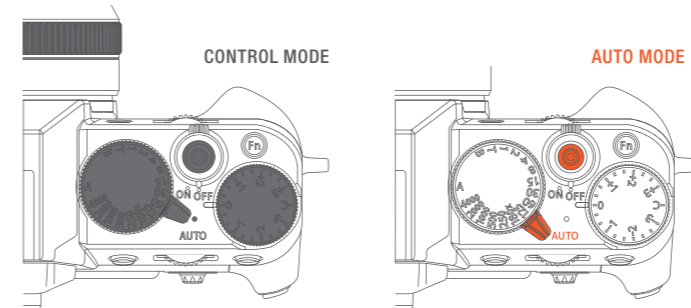
The X-T30's reflects the X Series design philosophy

Every element of the design has been made with the photographer in mind, from the dial-based operation to the compact, lightweight body. The X-T30 uses the latest generation APS-C sensor to record every picture in the highest quality and has an aesthetically-pleasing design that evokes a passion for capturing the moment, helping to immerse yourself into the world of photography. In addition, the camera incorporates numerous convenient features such as the touchscreen rear LCD panel and a well-hidden, built-in flash.



Wide variety of shooting modes to suit any shooting conditions

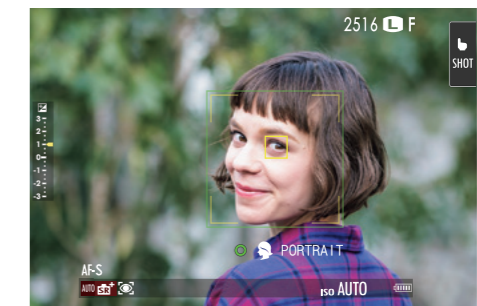
You can choose from "Manual" to choose exposure settings yourself, "Aperture Priority" to prioritize the depth of field and Bokeh - background blur effect in your image, "Shutter Speed Priority" to ensure capturing motion in your subject or "Program" to leave the choice of aperture and shutter speed to the camera. You can also opt for the "Advanced SR Auto" for intelligent, fully-automatic shooting.



You can select "Program," "Shutter Speed Priority," "Aperture Priority" and "Manual" by using a combination of the Shutter Speed Dial and the Aperture Ring on the lens. The Exposure Compensation Dial also allows you to adjust exposure by up to ±5 stops*.
 *When using the dial at "C" position

When using the Advanced SR Auto mode, the camera automatically selects the optimum shooting settings from 58 preset scenes.

When the Advanced SR Auto mode is selected, the camera examines the scene and automatically selects optimum autofocus and exposure settings. This mode is useful for situations where it is difficult to determine the right exposure settings. You only need to press the shutter to obtain high-quality images and capturing perfect photo opportunities.



- Scene Icon**
- AUTO AUTO
 - MOVING OBJECT
 - BACKLIT PORTRAIT & MOTION
 - SKY & GREENERY
 - BEACH
 - NIGHT
 - PORTRAIT & MOTION
 - GREENERY
 - LANDSCAPE
 - NIGHT (TRIPOD)
 - BACKLIT PORTRAIT
 - SUNSET
 - MACRO
 - PORTRAIT
 - SKY
 - SNOW

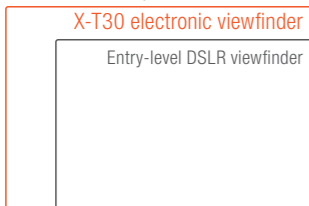


High performance electronic viewfinder

The X-T30 features an EVF with approx. 2.36 million dots and the magnification ratio of 0.62x*1. This is brighter and a higher resolution than previous models, and offers a magnification ratio equivalent to DSLRs. With a display time lag of just 0.005 seconds and refresh rate of 100fps*2, the EVF allows you to identify your subject's movements quickly and accurately. Unlike a DSLR, the EVF helps you see exactly what the sensor will capture, with the effects of Film Simulation and exposure reflected in real time so that you can shoot without checking how the settings affect the final image.

*1 With 50mm lens (35mm equivalent) at infinity and diopter set to -1m⁻¹ *2 When using the Boost Mode

Viewfinder size comparison



Viewfinder Brightness Comparison



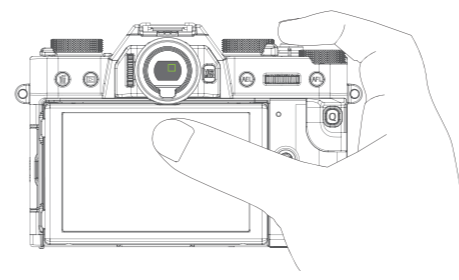
X-T20 X-T30

Tilting touchscreen LCD monitor

The X-T30 features a 3.0-inch tilting touchscreen LCD monitor that has a 3:2 aspect ratio and approx. 1.04 million dots. The tilting design enables easy shooting from high and low angles. All shooting information, normally displayed on the monitor, can be turned off if you want to concentrate on taking the picture.



Equipped with a capacitive touchscreen panel, the X-T30 allows touch-based controls during shooting, such as "Touch AF", "Touch Focus Area Selection", "Touch Shot" and "Touch Function". This capability means you can move your focus area faster and more intuitively than ever before or simply use a swipe motion to scroll through images when reviewing.

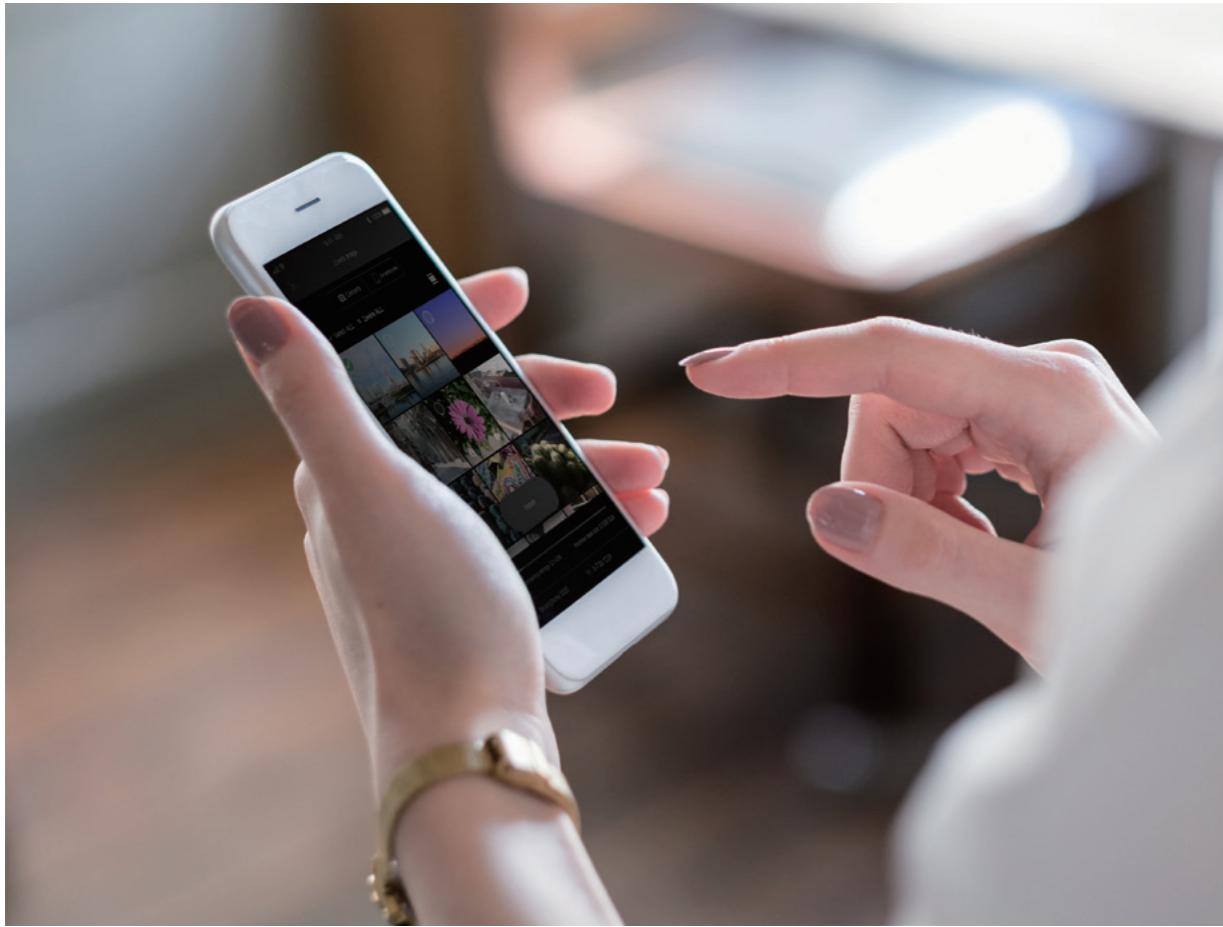


You can adjust the AF area using the touchscreen while looking through the viewfinder

Enhanced grip and handling

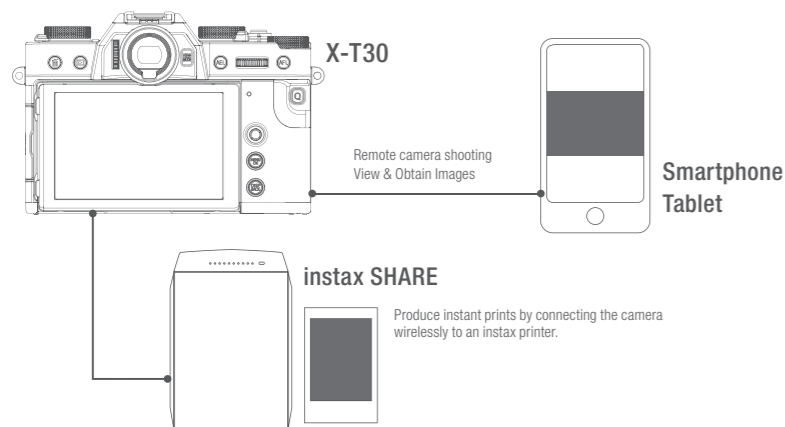
The X-T30 uses an eight-direction lever instead of the traditional 4 way selector buttons. This gives the camera's compact body extra room to grip the camera for added stability. At the same time, the grip thickness has been increased so the camera sits more comfortably in your hand.





Automatic transfer with Bluetooth®

The X-T30 can be paired with a smart device with Bluetooth for always on connection, enabling automatic transfer of pictures you take to share quickly on social media. The connection also enables other functions, such as remote shooting from a smartphone / tablet, viewing of pictures taken on your device, and printing direct to an Instax printer.



Requires installation of the FUJIFILM Camera Remote app on your smartphone or tablet

FUJIFILM Camera Remote

FUJIFILM's free application for use on smart devices has been updated making it easier to use. It offers a wide range of functions including automatic image transfer, remote shooting, individual photo upload, camera browsing and geo-tagging, using your devices' GPS and time information.



RAW developing software to help you realise your photographic potential with added flair

Capture One Express FUJIFILM FREE*1

This RAW developing software catalogs your pictures in a unique way for faster handling regardless of size and number of pictures stored. While developing RAW files, you can edit pictures utilizing FUJIFILM's exclusive Film Simulation modes.



FUJIFILM X RAW STUDIO FREE*2

You can use a USB cable to connect the X-T30 to a computer installed with this software, to take advantage of the camera's image process engine in developing the RAW files. It speeds up processing time dramatically and eliminates any loss of image quality.



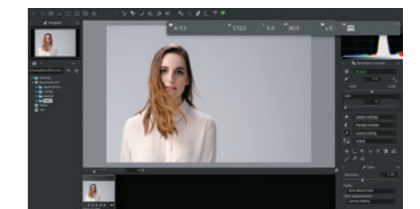
Adobe® Photoshop® Lightroom® Classic CC

This RAW developing software is a useful tool not only for processing RAW files but also cataloging your photos. It also supports Film Simulation modes.



FUJIFILM X Acquire FREE*2

This software can save and export camera settings, which is useful when you want to backup your settings or share them among multiple X-T30 cameras.



Capture One Pro FUJIFILM*1

This workflow software is an extended version of Capture One Express FUJIFILM, offering even greater number of functions and powerful editing capabilities. This software is available to purchase from Phase One's website.

*1 See Phase One website for details of supported cameras *2 Available as free download from the FUJIFILM website

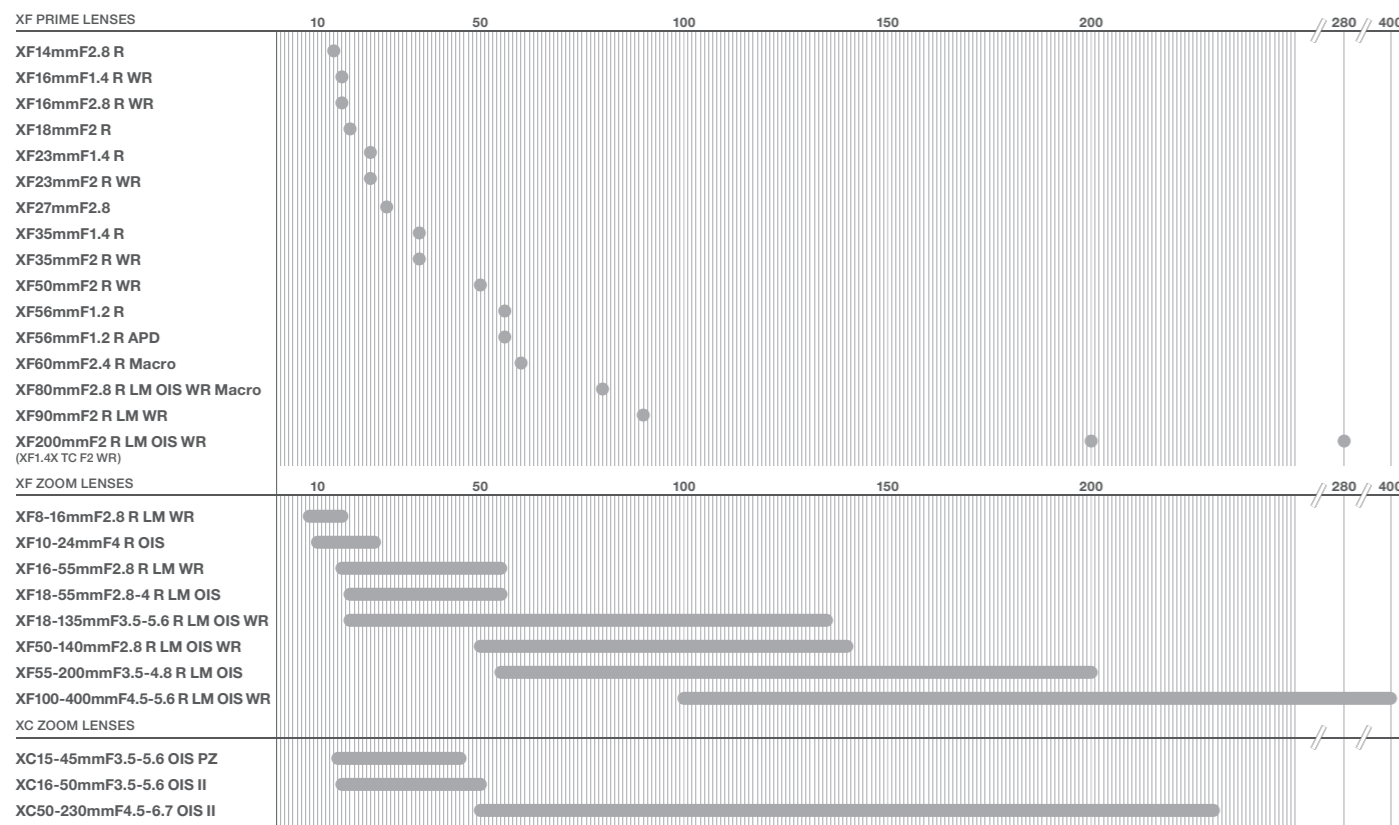
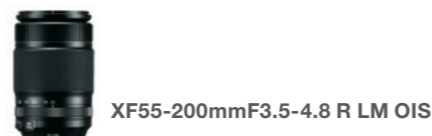
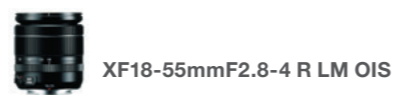
High-performance X-Mount XF lenses

Outstanding performance to utilize the quality of the X-T30

Compact, tough and fast-focusing prime lenses



Compact, lightweight zoom lenses



TELECONVERTER: XF1.4X TC WR / XF2X TC WR
 MOUNT ADAPTER: M MOUNT ADAPTER



Accessories

Genuine accessories that enhance the fun of shooting with the X-T30



CLIP ON FLASH
EF-X500 / EF-X20 / EF-42 / EF-20



STEREO MICROPHONE
MIC-ST1



MACRO EXTENSION TUBE
MCEX-16 / MCEX-11



HAND GRIP
MHG-XT10



LEATHER CASE
BLC-XT10



X-T30 + XF18-55mmF2.8-4R LM OIS 1/750sec F7.1 ISO200 Film Simulation: ASTIA



X-T30 + XF55-200mmF3.5-4.8 R LM OIS 1/1150sec F7.1 ISO400 Film Simulation: Velvia



Rediscover the joy of travelling

The X-T30 helps you on your travels to record precious once in a life time moments. The high-speed AF and continuous shooting ensures you capture every part of your trip. The outstanding image quality records scenes with the exact colors you remember, while the dials help you change settings without hesitation. The Little Giant X-T30, is the essential companion when traveling.



X-T30 + XF55-200mmF3.5-4.8 R LM OIS 1/55sec. F5 ISO320 Film Simulation: ASTIA



X-T30 + XF35mmF2 R WR 1/75sec. F2.2 ISO800 Film Simulation: Monochrome



Carry the X-T30 around with you to find moments of treasure in everyday life

Photo opportunities can be found everywhere you look in your daily life. Capturing a moment of joy in everyday scenery that would be otherwise uneventful is a great way to enjoy photography. The X-T30's elegant and classical design encourages you to carry it everywhere, and its compact and lightweight body makes it easy. Turn everyday life into opportunities to create works of art. The compact and premium X-T30, helps to add photographic magic to transform your everyday world.



X-T30 + XF18-55mmF2.8-4 R LM OIS 1/2000sec. F4 ISO160 Film Simulation: ACROS (Warm Black Image Tone)



X-T30 + XF55-200mmF3.5-4.8 R LM OIS 1/120sec. F6.4 ISO160 Film Simulation: PROVIA



X-T30 + XF18-55mmF2.8-4 R LM OIS 1/1600sec. F5 ISO800 Film Simulation: PRO Neg. Std