

SPECIFICATIONS

Model Name	FUJIFILM XF10
Number of effective pixels	24.2 million pixels
Image sensor	23.5mmx15.7mm (APS-C) CMOS with primary color filter
Storage media	SD Card (2GB) / SDHC Card (32GB) / SDXC Card (256GB) UHS-1 ¹
File format	still image JPEG (Exif Ver 2.3 ²) 14bit RAW (RAF format) / RAW+JPEG (Design rule for Camera File system compliant, DPOF-compatible)
	movie Movie File Format: MOV Movie Video Compression: H.264 Audio: Linear PCM Stereo
Number of recorded pixels	Normal L: (3:2) 6000x4000 / (16:9) 6000x3376 / (1:1) 4000x4000 M: (3:2) 4240x2832 / (16:9) 4240x2384 / (1:1) 2832x2832 S: (3:2) 3008x2000 / (16:9) 3008x1688 / (1:1) 2000x2000
	Motion Panorama 180°: Vertical: 2160x9600 / Horizontal: 9600x1440 120°: Vertical: 2160x6400 / Horizontal: 6400x1440
Lens	FUJINON single focal length lens f=18.5mm (35mm format equivalent: 28mm) F2.8 5 groups 7 lenses (2 aspherical glass molded lens included) Aperture: F2.8 - F16 1/3EV step (controlled with 9-blade aperture diaphragm) Focus distance: Approx. 10cm - Infinity / 3.9in. - Infinity
Sensitivity	Standard Output AUTO1 / AUTO2 / AUTO3 (up to ISO6400) / ISO200 to 12800 (1/3 step)
	Extended output ISO100 / 25600 / 51200
Exposure control	TTL 256-zone metering, Multi / Spot / Average
Exposure mode	P (Program AE) / A (Aperture Priority AE) / S (Shutter Speed Priority AE) / M (Manual Exposure)
Exposure compensation	still image -5.0EV - +5.0EV, 1/3EV step
	movie -2.0EV - +2.0EV, 1/3EV step
Face Detection	Yes
Eye Detection	Yes
Shutter type	Lens Shutter
Shutter speed	Mechanical Shutter 4sec. to 1/4000sec. (P mode), 30sec. to 1/4000sec. (All modes) Bulb mode (up to 60min), TIME: 30sec. to 1/4000sec.
	Electronic Shutter ³ 4sec. to 1/16000 sec. (P mode), 30sec. to 1/16000sec. (All modes) Bulb mode (1sec. fixed), TIME: 30sec. to 1/16000sec.
	Mechanical + Electronic 4sec. to 1/16000sec. (P mode), 30sec. to 1/16000sec. (All modes) Bulb mode (up to 60min), TIME: 30sec. to 1/16000sec.
Continuous shooting	Approx. 6.0fps (JPEG: max. approx. 13 frames) Approx. 3.0fps (JPEG: max. approx. 13 frames) *Use a card with UHS Speed Class 1. *Speed of continuous shooting depends on shooting environment and shooting frames.
Auto bracketing	AE Bracketing (2/3/5/7/9 frames) ±1/3EV - ±3EV, 1/3EV step Film Simulation Bracketing (Any 3 types of film simulation selectable) Dynamic Range Bracketing (100% - 200% - 400%) ISO sensitivity Bracketing (±1/3EV, ±2/3EV, ±1EV) White Balance Bracketing (±1, ±2, ±3)
Focus	mode Single AF / Continuous AF / MF / AF+MF
	type Intelligent Hybrid AF: TTL contrast AF / TTL phase detection AF, AF assist illuminator available
AF frame selection	Single point AF: 7x13 (Changeable size of AF frame among 5 types), Zone AF: 3x3 / 5x5 / 7x7 from 91 areas on 7x13 grid, Wide/Tracking AF: (up to 18 areas) * AF-S: Wide * AF-C: Tracking
White balance	Automatic Scene recognition / Custom 1 - 3 / Color temperature selection (2500K-10000K) / Preset: Fine, Shade, Fluorescent light (Daylight), Fluorescent light (Warm White), Fluorescent light (Cool White), Incandescent light, Underwater
Self-timer	2sec. / 10sec. / Smile / Buddy (LV1 - LV3) / Group (1-4 subjects) / Face Auto Shutter
Flash	Auto flash (Super Intelligent Flash) Effective range: (ISO1600) approx. 30cm - 7.5m/1.0ft. - 24.6ft. Guide Number: approx. 5.26 (ISO100-m)
Flash modes	Red-eye removal OFF Auto / Forced Flash / Suppressed Flash / Slow Synchro / Rear-curtain Synchro / Commander
	Red-eye removal ON Red-eye Reduction Auto / Red-eye Reduction & Forced Flash / Suppressed Flash / Red-eye Reduction & Slow Synchro / Red-eye Reduction & Rear-curtain Synchro / Commander *Red-eye removal is active when Face Detection is set to ON.
LCD monitor	3.0-inch, aspect ratio 3:2, approx. 1,040K-dot, Touch capable TFT color LCD monitor

¹ Please see the Fujifilm website (http://www.fujifilm.com/support/digital_cameras/compatibility/card/x/) to check memory card compatibility.

² Exif 2.3 is a digital camera file format that contains a variety of shooting information for optimal printing.

³ The Electronic Shutter may not be suitable for fast-moving objects. Flash can not be used.

⁴ Approximate number of frames that can be taken with a fully-charged battery based on CIPA standard.

Movie recording	4K 3840x2160 15P, Continuous recording: up to approx. 30min. Full HD 1920x1080 59.94p / 50p / 24p / 23.98p, Continuous recording: up to approx. 30min. HD 1280x720 59.94p / 50p / 24p / 23.98p, Continuous recording: up to approx. 30min. High Speed Movie 1280x720 1.6x / 2x / 3.3x / 4x, Continuous recording: up to approx. 7min. *For 4K movie recording, use a card with UHS Speed Class 3 or higher *Although movie recording will continue without interruption when the file size reaches 4GB, subsequent footage will be recorded to a separate file which must be viewed separately.
Mode dial	Advanced SR AUTO / P / S / A / M / Night / Sports / Landscape / Portrait Enhancer / SP (Scene Position) / Adv. / Panorama
Film Simulation mode	11 type (PROVIA/STANDARD, Velvia/VIVID, ASTIA/SOFT, CLASSIC CHROME, PRO Neg Hi, PRO Neg, Std. MONOCHROME, MONOCHROME+Ye FILTER, MONOCHROME+R FILTER, MONOCHROME+G FILTER, SEPIA)
Dynamic range setting	AUTO, 100%, 200%, 400% ISO restriction (DR100%: No limit, DR200%: ISO400 or more, DR400%: ISO800 or more)
Advanced filter	Toy camera, Miniature, Pop color, High-key, Low-key, Dynamic tone, Fish-eye, Soft focus, Cross screen, Partial color (Red / Orange / Yellow / Green / Blue / Purple), Fog remove, HDR Art, Rich&Fine, Monochrome [NIR]
Touch screen	Shooting Mode Touch Shooting, AF, Focus Area, OFF Touch Function
	Playback Mode Swipe, Zoom, Pinch-in / Pinch-out, Double-tap, Drag
Digital Tele-Converter	28mm* (Normal), 35mm*, 50mm* *35mm format equivalent
Other photography functions	4K Burst, 4K Multi Focus, HDR, Electronic level, Advanced SR AUTO, Eye detection AF, Face Detection, Interval timer shooting, Auto Red-eye Removal, Select custom setting, Motion panorama, Color space, Setting (Color, Sharpness, D-range, Gradation), Film Simulation, Advanced Filter, Framing guideline, Frame No. memory, Histogram display, Preview depth of focus, Pre-AF, Focus check, Focus Peak Highlight, Multiple exposure, Release priority / Focus priority selection, Fn button setting, ISO AUTO control, Interlock spot AE & Focus area, Edit/Save quick menu, Preview exp./WB in manual mode, Shutter Type, Touch screen setting, Square Mode(1:1), Snapshot, Control Ring Setting
Playback functions	RAW conversion, Image rotate, Auto image rotate, Face Detection, Red-eye reduction, Photobook assist, Erase selected frames, Multi-frame playback (with micro thumbnail), Slide show, Protect, Crop, Resize, Panorama, Favorites
Wireless transmitter	Standards IEEE 802.11b/g/n (standard wireless protocol)
Access mode	Infrastructure
	Encryption WEP / WPA / WPA2 mixex mode
Bluetooth®	Standards Bluetooth Ver 4.1 (Bluetooth low energy)
	Operating frequency 2402 - 2480MHz (Center frequency)
Wireless function	Geotagging setup, Image transfer (individual image / Selected multiple images), View & Obtain Images, PC Autosave, instax Printer Print, Pairing registration, Delete pairing registration, Bluetooth ON/OFF setting, Auto image transfer, Seamless transfer, Smartphone Sync. Setting
Other functions	Exif Print, 35 Languages, Date/Time, Time difference, Sound & Flash OFF, Quick start Mode, High Performance, Preview exp. in Manual mode, LCD Brightness, LCD Color, Preview Pic. Effect, DISP. Custom Setting
Terminal	Digital interface USB 2.0 High-Speed / micro USB terminal *Connectable with Remote Release RR-90 (sold separately)
	HD output HDMI Micro connector (Type D)
	Others ø2.5mm MIC / Remote Release jack
Dimensions	112.5mm (W) x 64.4mm (H) x 41.0mm (D) / 4.4 in. (W) x 2.5in. (H) x 1.6 in. (D) (Minimum depth: 25.9mm / 1.0in.)
Weight	Approx. 278.9g / 9.8oz. (including battery and memory card) Approx. 241.2g / 8.5oz. (excluding accessories, battery and memory card)
Operating Temperature	0 - 40°C / 32 - 104°F
Operating Humidity	10 - 80% (no condensation)
Power supply	NP-95 Li-ion battery (included)
	Battery life for still images ⁴ Approx. 330 frames
	Actual battery life of movie capture ⁴ 4K: approx. 55min., Full HD: approx. 70min. *Face detection is set to OFF
Continuance battery life of movie capture ⁴ 4K: approx. 75min., Full HD: approx. 120min. *Face detection is set to OFF	
Starting up period	Approx. 0.7sec., when High Performance mode set to ON Approx. 1.1sec., when High Performance mode set to OFF *Fujifilm research
Accessories included	NP-95 Li-ion battery, AC power adapter, Plug Adapter, USB cable, Hand strap, Lens cap, Owner's manual

FUJIFILM

Value from Innovation



COLORS / DIMENSIONS

CHAMPAGNE GOLD

FRONT



BLACK

FRONT



BACK



TOP



Find new life.

XF10

FUJIFILM



To ensure correct usage, read owner's manual carefully before using your equipment.

All photos, illustrations, drawings and other images in this brochure are intended for illustrative purposes only.

For more information, please visit our website http://www.fujifilm.com/products/digital_cameras/index.html

*Specifications are subject to change without notice ©2018 FUJIFILM Corporation

more info <https://fujifilm-x.com/xf10/>



Favorite one.

Choosing a camera is a very personal experience. Some people prefer analog and retro designs, while others opt for a stylish and futuristic look. Some may want to create artistic images, but others are happy just taking snapshots. So, what kind of camera do people prefer to carry with them every day? Probably one that not only has a wide variety of functions, but one that looks great too. The FUJIFILM XF10 is the perfect choice.

XF10

01

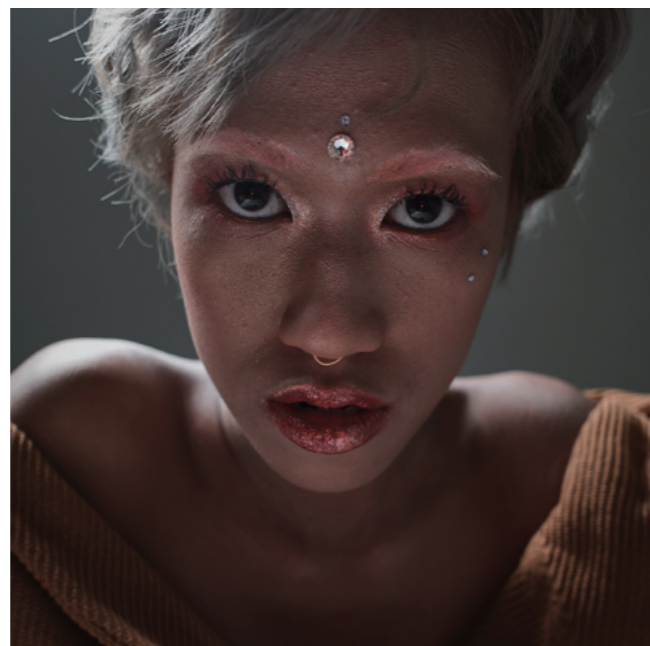


Find new life.

We all have precious memories, from the exciting people and things we come across in daily life, to the breathtaking sights we see. But these memories are often difficult to precisely explain and share with others. With the XF10, a premium compact digital camera that fits in your pocket, you can capture the moments, then share scenes and the stories behind them. Find your precious memories and capture them in superb quality with the XF10.

XF10

02



With its 18.5mm fixed lens, the XF10 is ideal for capturing a wide variety of subjects including landscapes and street scenes. And, thanks to its compact size and easy operation, the XF10 allows you to shoot and then instantly share those moments on social media. The XF10 highlights the fun in your everyday life.

FUN

XF10

03

In our daily lives, we come across many scenes that we want to capture and remember, when out with friends or just walking the streets. With its simple and intuitive operation, the XF10 can capture all these moments you discover.

FIND

XF10

04



PROVIA
Standard mode for general photography that delivers radiant skin tones and vibrant colors, just as you remember them.



Velvia
Combines high saturation and accurate colors to produce vivid images. Ideal for landscapes and wildlife, while its deep blacks also make it perfect for night scenes.



RICH & FINE
Add bright and vivid colors to the center of the image. Perfect for food and tabletop photography.



HDR ART
Create artistic effect by emphasizing tone reproduction and dynamic range.



PRO Neg. Std
Produces accurate skin tones in portraits shot under controlled light. Its softer, gentler saturation makes it useful for general snapshots.



SEPIA
Adds a warm brown tone across the frame to simulate a nostalgic, sepia look. Works best on retro subjects.



TOY CAMERA
Create shaded borders as taken by toy cameras. (nostalgic effect)



MONOCHROME (NIR)
Create monochrome photographs like those taken by near-infrared cameras.

PROVIA | Velvia | ASTIA | CLASSIC CHROME | PRO Neg. Hi | PRO Neg. Std | MONOCHROME | SEPIA

In the days of film photography, photographers used to select the ideal type of film to capture a scene or subject. Using the knowledge and expertise acquired through developing these films for more than 80 years, the XF10 offers 11 different modes which replicate the style of classic film prints and allow you to select your favorite look.

FILM

XF10

05

TOY CAMERA | MINIATURE | POP COLOR | HIGH-KEY | LOW-KEY | DYNAMIC TONE | SOFT FOCUS
FISH-EYE | HDR ART | CROSS SCREEN | RICH & FINE | PARTIAL COLOR | MONOCHROME (NIR) | FOG REMOVE

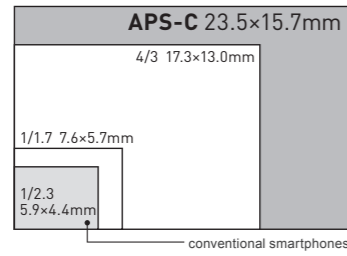
Do more than just capture a moment. Be more free and creative by using the XF10's Advanced Filters to add an artistic touch to your photos and express your creative self.

FILTER

XF10

06

LARGE SENSOR



Despite its compact size, the XF10 has an APS-C sized image sensor. This is 14 times larger than the sensor inside conventional smartphones. This helps capture high quality images in low lighting conditions and creates beautiful out-of-focus background effects.

LENS



The renowned FUJINON lens on the XF10 is optimized for the 24.2 megapixel APS-C sized sensor and produces outstanding detail and sharpness.

COLOR AND HIGH SENSITIVITY



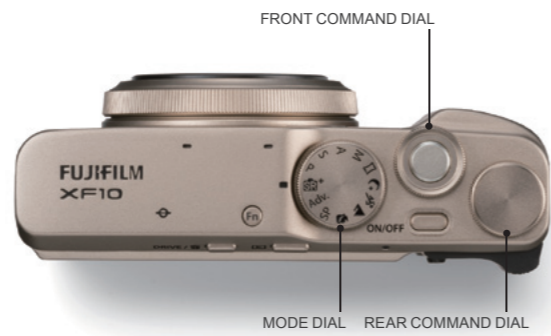
The XF10 has all you need to make your pictures look special. It delivers natural skin tones, beautiful color reproduction, low noise in poor lighting conditions, and excellent edge-to-edge sharpness.

IMAGING

XF10

07

SIMPLE OPERATION



Use the mode dial to select the shooting mode and adjust the shutter speed and aperture using the front and rear command dials. You can also access the functions by flicking the touchscreen and pressing the Fn (function) buttons.

By selecting the Advanced SR Auto mode, the camera will recognize both the scene and subject you are looking at and automatically optimize the focus and camera settings.



ADVANCED SR AUTO MODE

TOUCHSCREEN

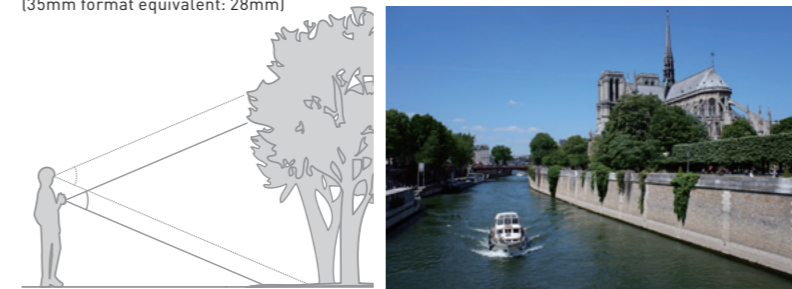


Operate the camera just like a smartphone. Touch controls include pinch and zoom, drag to move around the image and swipe gestures.

OPERATION

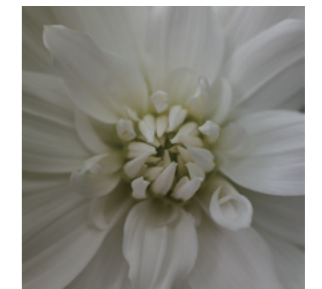
FOCAL LENGTH AND ANGLE OF VIEW

f = 18.5mm
(35mm format equivalent: 28mm)



The XF10 features a 18.5mm F2.8 wide angle fixed lens, which makes it perfect for everything from snapshots to landscapes.

MACRO



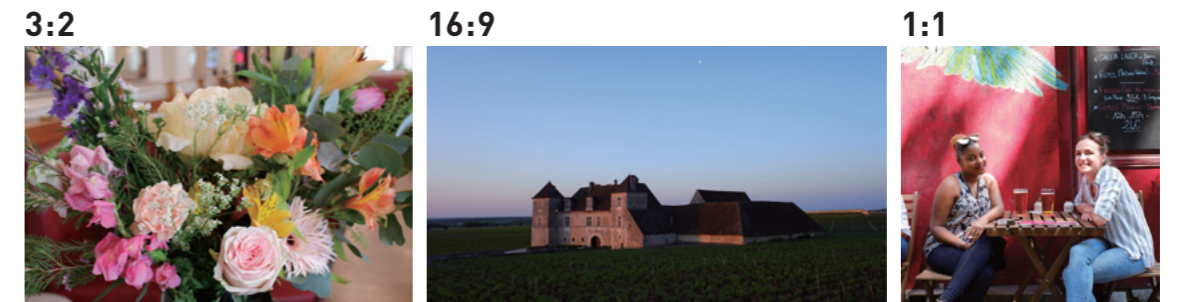
Macro mode lets you shoot objects as close as 10cm away from the lens, meaning you can get closer to your subject.

DIGITAL TELECONVERTER



Enables you to switch between 35mm* and 50mm* equivalent focal lengths as well as the standard 28mm* *35mm format equivalent

ASPECT RATIO



As well as the standard 3:2 aspect ratio, you can also select 16:9 which is ideal for shooting video, and 1:1 which is perfect for posting pictures on social media.

FRAMING

XF10

08

SNAPSHOT



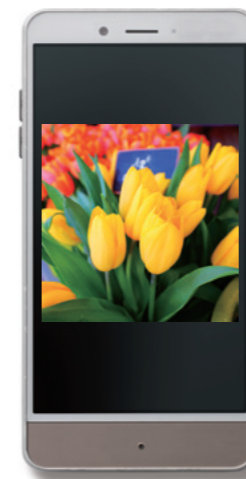
SNAPSHOT presets the focus and aperture to 2m/F8 or 5m/F5.6, which gives a relatively wide depth of field. This is perfect for capturing subjects instantly and in focus at those distances.

SUPER INTELLIGENT FLASH



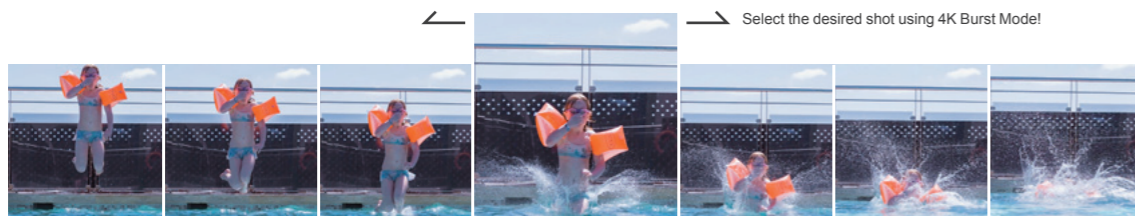
The built-in flash automatically adjusts the light output according to the scene, making it easy to capture more natural looking shots.

WIRELESS COMMUNICATION



4K BURST SHOOTING

15fps



High resolution, high-speed continuous shooting to capture fast-moving subjects. Choose the best shot from the 15 frames taken in a second.

MOVIE FUNCTIONS

4K
3840x2160

Full HD
1920x1080

HD
1280x720

High Speed HD
1280x720 1.6x / 2x / 3.3x / 4x

Capture the world around you in ultra high definition with the 4K movie capability. Plus, the XF10 can record high-speed videos in Full HD that will let you shoot slow motion footage with ease.



Combine the XF10 with a Bluetooth® compatible smartphone or tablet for seamless transfer of your images so they can easily be shared with your family and friends. You can also remotely shoot pictures using the free FUJIFILM Camera Remote app, and produce instax prints by connecting the camera to an instax printer.

FUNCTIONS

XF10

FUNCTIONS

XF10